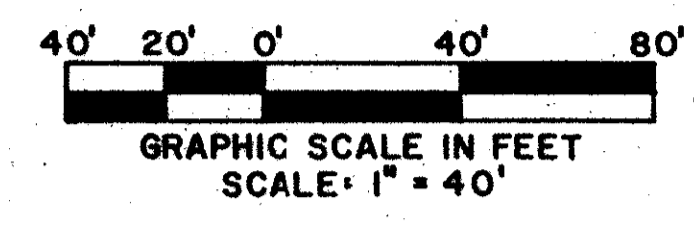


REPLAT OF A PORTION OF BREAKERS WEST PLAT NO. 6 REPLAT

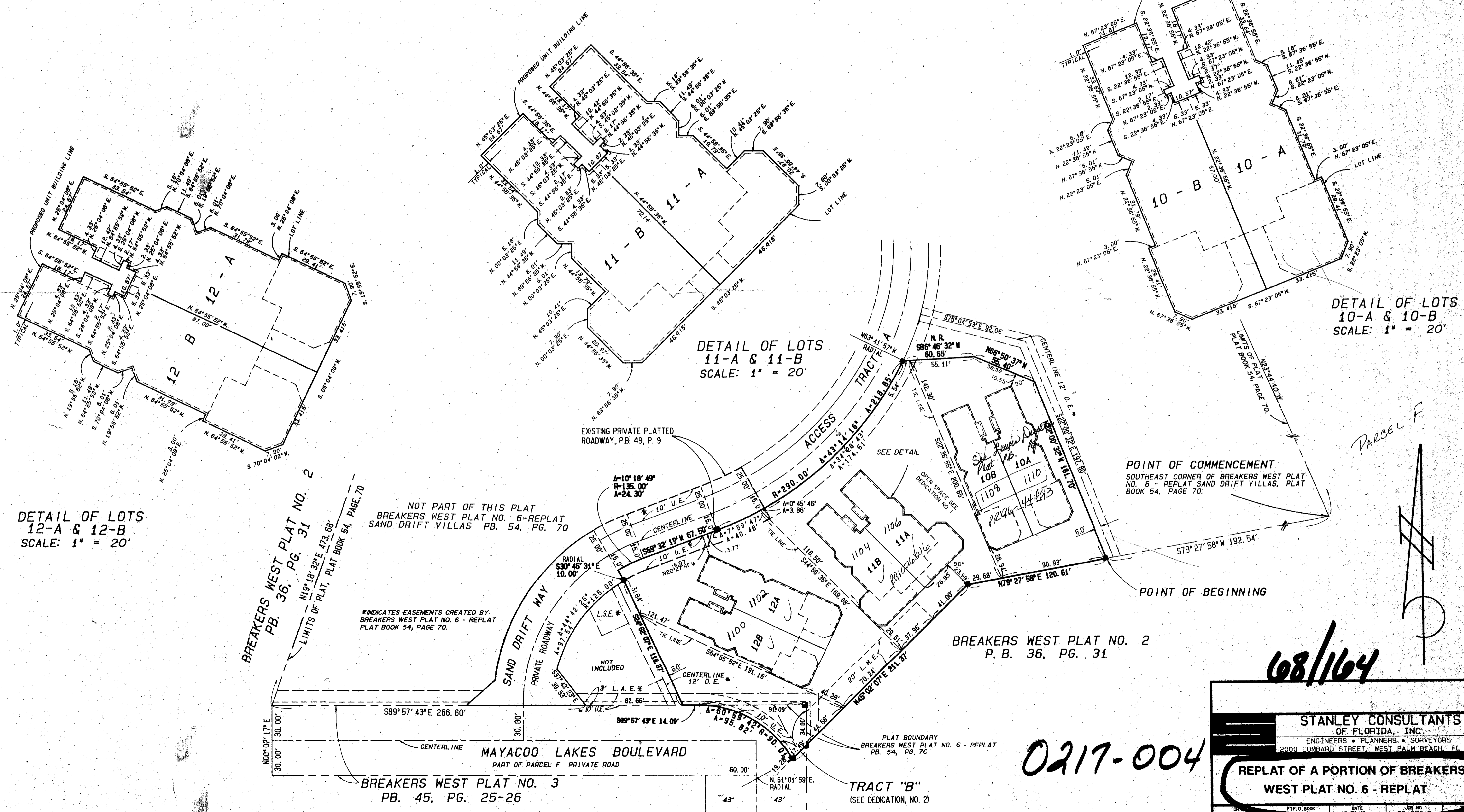
PART OF BREAKERS WEST P. U. D.

BEING A REPLAT OF A PORTION OF BREAKERS WEST PLAT NO. 6 - REPLAT AS RECORDED IN PLAT BOOK 54, PAGES 70-72, ALSO BEING A REPLAT OF A PORTION OF BREAKERS WEST PLAT NO. 3 AS RECORDED IN PLAT BOOK 45, PAGES 25-26, OF THE PALM BEACH COUNTY RECORDS, SITUATE IN SECTION 30 AND 31, TOWNSHIP 43 SOUTH, RANGE 42 EAST, PALM BEACH COUNTY, FLORIDA

OCTOBER, 1991



SHEET 2 OF 2



DETAIL OF LOTS 12-A & 12-B SCALE: 1" = 20'

DETAIL OF LOTS 11-A & 11-B SCALE: 1" = 20'

DETAIL OF LOTS 10-A & 10-B SCALE: 1" = 20'

TAZ # 817

BOOK 68 PAGE 164
FLOOD ZONE B FLOOD MAP # 150A
QUAD # 46 ZONING RS
SE 73-219
RFD NAME SUND
02/13/92

BREAKERS WEST PLAT NO. 2
PB. 36, PG. 31
LIMITS OF PLAT, PLAT BOOK 54, PAGE 70

NOT PART OF THIS PLAT
BREAKERS WEST PLAT NO. 6-REPLAT
SAND DRIFT VILLAS PB. 54, PG. 70

#INDICATES EASEMENTS CREATED BY
BREAKERS WEST PLAT NO. 6 - REPLAT
PLAT BOOK 54, PAGE 70.

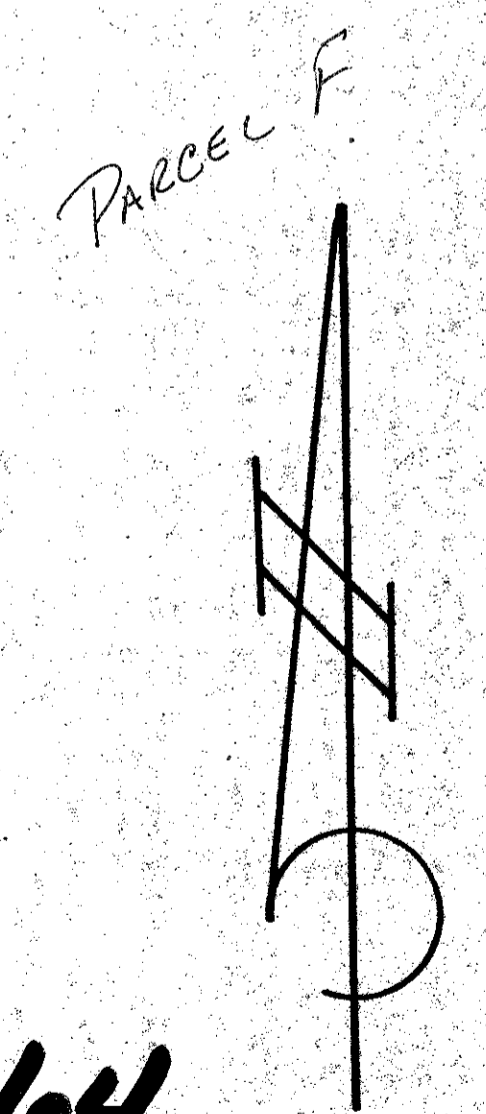
BREAKERS WEST PLAT NO. 3
PB. 45, PG. 25-26

BREAKERS WEST PLAT NO. 2
P. B. 36, PG. 31

TRACT "B"
(SEE DEDICATION, NO. 2)

POINT OF COMMENCEMENT
SOUTHEAST CORNER OF BREAKERS WEST PLAT
NO. 6 - REPLAT SAND DRIFT VILLAS, PLAT
BOOK 54, PAGE 70.

POINT OF BEGINNING



08/164

0217-004

STANLEY CONSULTANTS OF FLORIDA, INC.
ENGINEERS • PLANNERS • SURVEYORS
2000 LOMBARD STREET, WEST PALM BEACH, FL 33407

REPLAT OF A PORTION OF BREAKERS WEST PLAT NO. 6 - REPLAT

DATE	FIELD BOOK	NO. OF SHEETS	SHEET NO.
10/15/91		2	2
DESIGNED	CHECKED	SCALE: 1" = 40'	CADD FILENAME: BREAKG
DCL	DCL		